

Washington Alpine Club | Bulletin

September 2012 | Volume 97, Issue 7



Washington Alpine Club

P.O. Box 352
Seattle, WA 98111

www.wacweb.org

The Bulletin is 100% online

This format allows us to offer photos, color, more timely content, and saves a lot of paper and trees. For those without email, with dial up connections, or with incompatible software we will continue to mail the Bulletin.

IN THIS IS SUE

WAC Information	2
President's Corner	3
News	4
News	5
Events/Guye Cabin	6
Membership	7

Crevasse Jump by Rob Miller



I had the honor of leading a five person team of WACers on a Rainier summit climb July 28th/29th. On the team with me were Petek and Jeff, both 2012 Basic Climbing Class graduates, Pradeep, 2010 Basic grad and his friend Balaji. On the first day we hiked all the way to Ingraham Flats where we set up high-camp.

We were a little bit late getting out of camp Sunday morning. We got going at 2 am and by then there was already a huge line of climbers stacked up on the trail ahead of us who had ascended from Camp Muir in the early morning hours. Our five person rope team got in line on the trail behind the other climbers. Progress up Ingraham Flats seemed unusually slow. In the darkness it was impossible to see what the holdup was. The line would move up a few feet and then stop then move a few more feet and stop again. "What the heck is going on up there?" I wondered.

After about 30 minutes news trickled back that there was a crevasse blocking the path that climbers were having trouble with. I heard someone up ahead say something about "self-arrest". Finally we reached the point in question. The boot-

trail led right up to the edge of a crevasse that cut the trail at a 90 degree angle. As the leader of our team I was just two feet behind the last person of the team in front of us. I watched as that climber stepped to the edge of the crevasse, paused a few seconds and then stretched out one leg and with a big jumping motion he made the leap across.

Now it was my turn, "holy crap" I thought as I looked at it. The crevasse was about five or six feet wide. The jumping platform had been worn down and appeared to be about a foot lower than the landing platform on the other side. "I'm not sure I can make that jump," I thought to myself. To the right and left were two more crevasses parallel to the boot-trail and connected to the crevasse in front of me. There was no way around. I figured I had about a 50/50 chance of successfully making the jump and was even less sure of one of my team members. Desperate for an alternative I looked left and right again. I noticed about ten feet to the right the crevasse narrowed a little bit and the jumping platform was higher. I called back to Jeff, second on the rope, and told him

continued page 4 >>

WAC Information

Calendar

SEPTEMBER 2012	
September 22	Open House, Lunch, Work Party
OCTOBER 2012	
October 21	Open House, Potluck lunch, The Annual Member Meeting
NOVEMBER 2012	
November 3 / 4	Remote Wilderness First Aid (tentative)
November 18	Remote Wilderness First Aid Instructor
DECEMBER 2012	
December 15	New Snow Dinner & Open House
JANUARY 2012	
January TBA	Marmot Ski Demo
January TBA	Randonee/Telemark Class Begins
FEBRUARY	
February TBA	Hog Loppet Ski Tour
February TBA	WAC Fun day
MARCH	
March TBA	Snowqualmie Loppet Ski Tour
March TBA	Vegetarian Potluck Dinner

Is Your Contact Info Current?

You can check these things on the Washington Alpine Club website: www.wacweb.org. If your mailing address or email address changes please let us know!

Moving?

Send change of address forms to:

Washington Alpine Club

PO Box 352

Seattle, WA 98111

Or email Dave Mitchell at:

dtmitch@mindspring.com

New Email Address?

To update your email address log on to

www.wacweb.org

If you don't have an account, you can use the shared name and password:

User name: climbing / Password: climbon

Join the WACList on Yahoo

If you want to get mail on the WAC email list, join the yahoo group at:

<http://groups.yahoo.com/group/waclist/>

Post message: waclist@yahoogroups.com Subscribe: waclist-subscribe@yahoogroups.com

Important: You must be a current member! We have to approve you before you can join, so please put your name in the comment section.

Washington Alpine Club

Founded 1916 Incorporated 1923

P.O. Box 352, Seattle, WA 98111

www.wacweb.org

Member Of

Federation of Western Outdoor Clubs,
Washington Association, Washington
Environmental Council, Washington Wilderness
Coalition, and MidFORC Coalition

The primary purpose of this club is to encourage the healthful enjoyment of the great outdoors, to preserve its natural beauty and to promote good fellowship among all lovers of nature.

BOARD OF TRUSTEES

President

Mike Mahanay | 206.931.4713

1st Vice President

Pat O'Brien | 206.527.6881

Treasurer

Dave Wilson

Secretary

Ira Rushwald

At Large

Susan Ashlock, Pat Beurskens, Mike Daly

Eli Holmes, Charles Muzio, Toby Young

ALPINE DIVISION

Climbing Class Co-Chairs

Pat O'Brien, Amanda Stoneham, Ira Rushwald,
Eric Poley, Gerhard Schneider, Andrew Sullivan,

April McCoy

WINTER DIVISION

Telemark / Randoee Ski

Randy Oakley

Nordic

Eli Holmes, Karel Zikan

Back Country

Susan Ashlock, Alex Ford, Denny Trimble

PROPERTY & MEMBERSHIP

Cabin Chairman Archie Brenden | 206-542-2335

Work Party . . . Archie Brenden | 206-542-2335

Membership . . . Sarah Morgan | 000-000-0000

Publicity Kay Ishii | 206.336.7721

Cabin Supply Tami Sargent | 360-377-3217

PUBLIC RELATIONS

Bulletin Editor . . . Magda Balise | 360.378.6026

Conservation . . Mike Mahanay | 206.931.4713

Circulation Ira Rushwald | 206-725-2725

By Laws Ira Rushwald | 206-725-2725

President's Corner

September 2012 by Mike Mahanay



This has been a great summer. Even though we counted the temperatures above 80 degrees by the minutes we have been enjoying plenty of dry weather. This summer WAC folks have been all over our state and around the world - Europe, Alaska, S America, and Asia. The Alps, Chilkoot Trail, Grand Teton, and Wind Rivers.

April and Pat B. are leading the WAC Intermediate Climbing class. The class started with the trip to the Coleman Glacier, and then will move on to the Mountaineers Wall in Leavenworth. The Class builds on the skills learned in the Basic Class. This is a great class with the best instructors this side of the Columbia River!

This weekend the weather is starting to cool off and the clouds are returning. Thoughts are beginning to turn to the dusty boards against the wall in the basement. Soon the summits of the Snoqualmie Peaks and Northern Cascades will have a pretty coating of white.

Our Remote Wilderness First Aid Class is open for registration. We encourage people to take the class, and then go on to the instructor class. We have four WAC instructors but really need several more to make our program what it should be. We are working to schedule an instructor class this fall.

The Annual Meeting is next month on October 21. We'll have an Open House, Potluck Lunch, Member Meeting, Video, Raffle, and Group Photo.

Everyone please attend!

We have worked hard at Guye Cabin this summer. Come up and see the huge amount of wood the volunteers have split and stacked. Phil Harvey built a beautiful new bookcase. Mark Hume has been doing some concrete work, Archie has been sealing the basement wall, Dale Ott has done firewood and taken care of the yard, Chris Martin, Daniel, Michele, and Ilana painted the outside of the Cabin. Eric and Ellie painted the kitchen. Ralph, Virginia, Eric, Laird, Jiri, Magdalena, Michael Balise and a host of others have worked over the summer. If you use Guye Cabin over the winter you should spend at least one day in the summer helping out. September 4, 5, or 22nd are good options. Thanks to everyone who has helped out over the summer! We could not do the things we do without you. The entire Club appreciates your efforts.

We are also looking to fill the slate of Board positions in the next few weeks. Do you have time to attend a Board meeting once a month and take the lead in Club projects such as the Snow Dinner, Bulletin, or marketing our Club? We need your help.

The Washington Alpine Club is an amazing group of people all with the outdoors as a common interest and tie that binds us together. Members new and old step up to commit to giving back a little to our Club, not only with the work parties at the Cabin, but taking the lead as Climbing Class Chairs & Instructors, Wilderness Remote First Aid instructors, and serving

on the Board of Directors.

Most of us are not born leaders, but are continually working to improve our leadership skills. Like rope management and skiing it takes practice! Can you organize and lead a successful ascent of Mount Rainier or Mount Olympus? The WAC Chair and Board positions are excellent places to learn and practice leadership skills that will aid you both on the mountain and in your everyday life. Talk to someone on the Board to discuss what you can do to help our Club.

Crevasse Jump

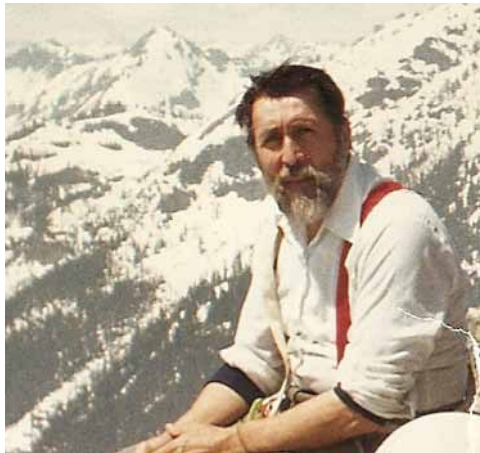
(continued from page 1)

I was moving off-trail and to follow me. From this new location I pulled up enough slack rope for the jump and with Jeff in self-arrest position I made the leap. Then I moved up until Jeff was at the edge. I got into self-arrest position and Jeff made the leap. Then we moved up again. Now it was Petek's turn. I heard her call out, "Oh God" then she made the leap. Then Balji and Pradeep and we were all across. After that I noticed the next rope team following us so we established a new trail and jump point. That was the first time I've ever jumped a crevasse that wide. It was an adventure, especially in darkness.

Twelve hours later on the return trip we managed to find a new route that avoided the crevasses altogether by traversing higher up on the Ingraham Flats glacier. We blazed our own trail as there were no boot prints in the route we took to avoid the crevasses. Two weeks later Petek would return to the same place on a second summit trip. She reported the trail we blazed had become an established boot track that everybody was using around the crevasses.

Having climbed Rainer twice via the Disappointment Cleaver route I believe the most hazardous part of the whole climb is the traverse from Ingraham Flats high-camp to the bottom of the Disappointment Cleaver. This part of the climb seems easy but should not be taken lightly. There are lots of crevasses and risk of ice fall from above.

Remembering Bill Manderville



Bill passed away this summer. His service was held at Tahoma National Cemetery.

* * *

My brother Kevin and I first met Bill when he offered a climbing class through the church. Bill's dream was to be the oldest man to climb Rainier. He was a master of the "rest step". He would do calisthenics every morning. We climbed many mountains together. He climbed the Matterhorn in Switzerland, and loved Leavenworth. His house has bavarian trim on the roof and the kitchen has a full size Switzerland painting that Bill painted. He did water colors and pen & ink mountain pictures. Guye Cabin was not the gem of the Club for Bill- the people were! Bill's last climb with the WAC was Mount Baker in 1989 at the age of 64. "off belay Bill" we'll miss you.

Dale Ott

* * *

We lived just 3 houses up the street from Bill. My brother Greg and I delivered the Seattle Post Intelligencer to Bill's house

back in the 70's and would see Bill doing pull-ups in his garage. As a kid I thought Bill's climbing ropes and ice ax were pretty cool and wanted to know more about them. Bill also drove an orange Saab sports car that impressed me. When he sold the car to someone else he said he was doing me a huge favor, "the car would only lead to trouble". Bill was my instructor when I took the Basic Climbing course when I was 16 years old, he drove me to each class and every weekend training climb. He was a nice man who helped me out when I was young.

John Sargent

* * *

I second part of John's discription of Bill. He was also one of my instructors when I took the class in 1979. He had a very calm understated manner that inspired confidence. I climbed the Tooth the first time during the class in a group Bill led. He was still helping when I first chaired the class. You always felt like things were under control with Bill.

Pat O'Brien



Bill did this watercolor of the Guye Cabin which is many people's favorite.

“For Climbers, Risks Now Shift With Every Step” from the NYT

http://www.nytimes.com/2012/07/15/us/for-climbers-risks-now-shift-with-every-step.html?_r=1

Baker Seracs, WAC Intermediate Ice Class,

August 24-26 2012

<http://www.flickr.com/photos/laurelfan/sets/72157631316291886>



Ira Rush Grand Trip

Here are some photos of our trip to the Tetons and our climb. I've included links from the various people, you can choose whatever you so desire. None of us wrote up a trip report however. I had planned on doing it but it never happened. I know there are a lot of pictures below but hopefully you can scan them quickly to see what you are interested in.

-Ira

<https://picasaweb.google.com/116314271095664000121/20120726GrandTeton>

http://seattlejaunts.smugmug.com/Category/Travel/Grand-Teton-Climb-July/24459414_PTw8Cv#!i=1995313054&k=kj3SWtk

<https://picasaweb.google.com/100177688199050250452/GrandTetonUpperExumRoute>

<http://www.facebook.com/media/set/?set=a.10151967325505072.882465.707265071&type=1>



Wicked Good Blueberry Cake

Perhaps someone will make this and bring it to the next work party or Annual Meeting-

Wicked Good Blueberry Cake

Here's a recipe from Aunt Patty in Boston. This cake rocks. Just thought I'd pass it along.

Blueberry cake:

1 3/4 cup flour

2 tsp. baking powder

1/4 tsp. salt

1/4 cup shortening (crisco)

1 cup sugar

1 unbeaten egg

1/2 cup milk with 1 tsp. vanilla

2 cups blueberries

Sift together 3 times the flour, baking powder, and salt. Set aside. Using mixer, cream shortening. Slowly add sugar, beating until light. Add egg and beat well. Add flour mixture alternately with milk/vanilla mixture in thirds (flour, milk, flour, milk, flour, milk) beating after each addition. Fold in blueberries. Bake in greased and floured 8" pan at 350 for 50 minutes or until toothpick comes out clean from middle of cake. Cool. Remove from pan and dust top with powdered sugar.

Guye Cabin



Cabin History

1932 - "The cabin will be known as Guye Cabin due to its proximity to Guye Peak. It is owned by the Washington Alpine Club of Seattle. A variegated group of bathers, card sharks, lounge lizards, cats, mountain climbers and skiers."

One of the best things about WAC membership is historic Guye Cabin on Snoqualmie Pass. The jewel of the Alpine Club, the Cabin serves as the focal point for many club classes, activities, and gatherings. First built in 1932, it has been expanded over the years to become a wonderful rustic mountain lodge. It has easy access to all the summit ski areas, the Alpine Lakes Wilderness Area, the Pacific Crest Trail, and is a popular meeting place for members year round!

Please check the WAC website! <http://www.wacweb.org>

New Membership Chair

Please welcome our new membership chairperson - Sarah Morgan. Sarah took this year's Basic Climbing Class and has graciously volunteered to be our new membership chair as a way of giving back to the club. We'd like to thank Dana Beck for all her help as Membership Chair last year.

Think about renewing your membership!

Support the WAC and renew your membership for 2013 now!

Fall is the time to renew your membership in the WAC for another year. It is super easy to do! Just look yourself up in the members section (climbing/climbon is the user name/ password) to see when your membership expires.

We recommend you just renew online via our Google checkout. Just go to this link, and scroll down to the renewal section

<http://www.wacweb.org/About/join.view>

We hope that you continue to support the Washington Alpine Club and take advantage of all the opportunities that membership offers. Please consider adding an additional gift to your membership renewal check. Your contribution will help us with scholarships and major upcoming cabin expenses. Thanks for supporting your club!

You can also pay by check- Please send your check today made out to "WAC", to:

Washington Alpine Club
c/o Sarah Morgan
1623A S Weller St
Seattle, WA 98144

e-mail: swest81@gmail.com

We hope that you continue to support the WAC!

Thank you for supporting the WAC!

Annual Dues (renewals)

	Regular	Senior	Out of State
Through Dec 2012	\$30	\$15	\$20
Through Dec 2013	\$60	\$25	\$35
Through Dec 2014	\$85	\$35	\$50
Through Dec 2015	\$115	\$45	\$65
Through Dec 2016	\$135	\$55	\$80

Instead of paying nightly (\$15) to **stay at the Guye Cabin**, you can pay the annual cabin dues which are effective Jan 1 to Dec 31. You can add the annual cabin dues to online renewal or check with a note indicating that you are including cabin dues and which WAC adult members are included (if paying dues for a family with 2 or 3 adult WAC members).

Individual Member	\$80.00
Immediate Family of two WAC Members	\$130.00
Immediate Family of three or more WAC Members	\$150.00

Get your WAC tee shirt!

They are cut very nicely and come in WAC green, sunset orange, Snow Lake blue or Snoqualmie Pass granite grey.

You can pick them up at WAC events, downtown at lunch, in West Seattle, Pat O'Brien's, or at the Annual Meeting.

S,M,L, XL,



The Washington Alpine Club is on Facebook!

Facebook is yet another way to keep up with the Washington Alpine Club. Once you've joined Facebook, go to the WAC page and join the group. And invite your friends to join the group. You can connect with other WAC members, get information on upcoming events and post messages for other members.

www.facebook.com/groups/6180692402

Washington Alpine Club



Washington Alpine Club
P.O. Box 352
Seattle, WA 98111

Address Correction Requested
Do Not Forward

FIRST CLASS

TO: